

Bluegrass Banjo Roll Fiesta Banjoree 2019



Rolf Schild

Rolf.schild@gmail.com

www.banjogermany.de

FW-Roll permanent

Rhythmus = Bossa Nova
Bu Bu Ba Bu Bu Ba Bu

P H P H I P H I
(1)

FW Roll mit Pause

Bum Ba Ba Ba Ba Ba

P P H I P H I

FW 2. Saite

FW 4. Saite

PAUSENFÜLLER

1. Pinch

2. Tag Lick

P M P M P M H I P I P
P P P

Tag Lick mit linker Hand

1. Vorübung

2. Vorübung

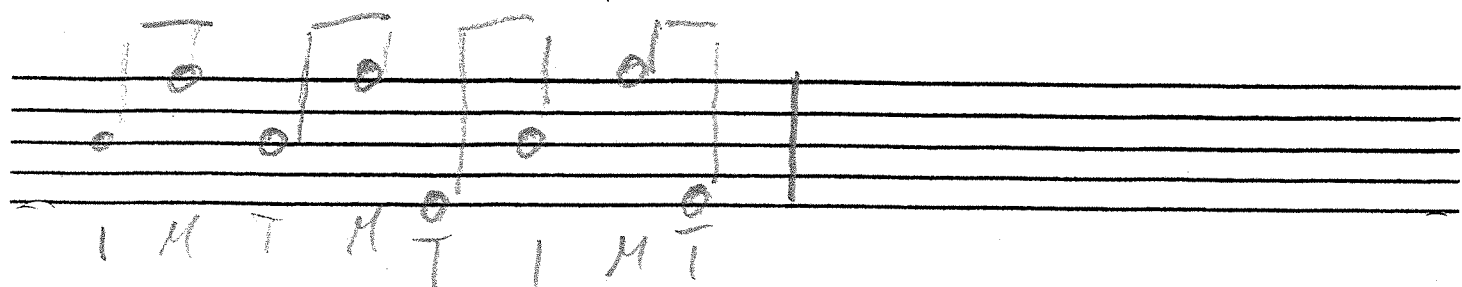
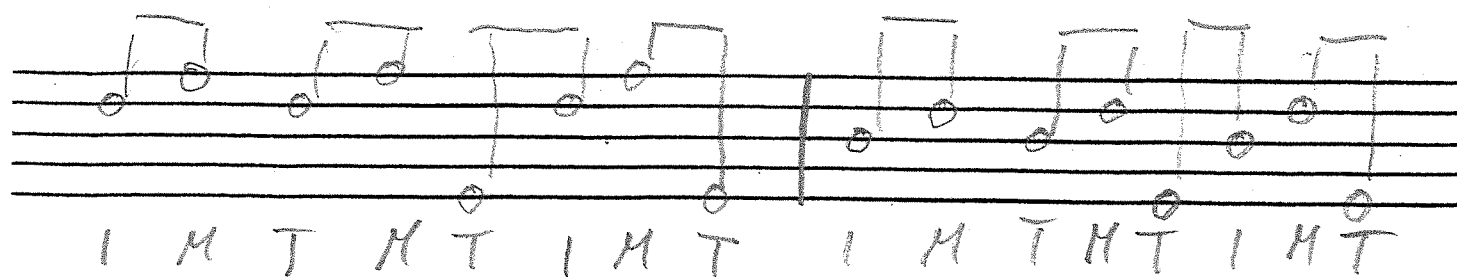
zusammen *

ROLL THEM CABBAGE DOWN FW-ROCK

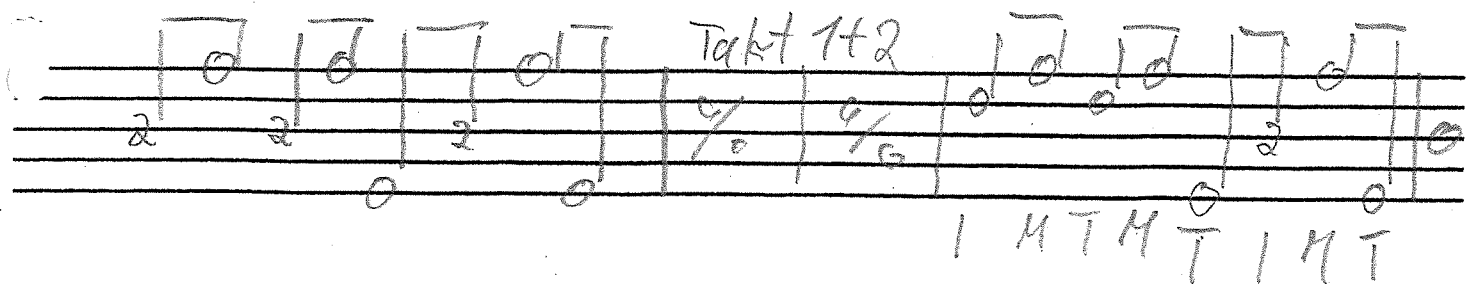
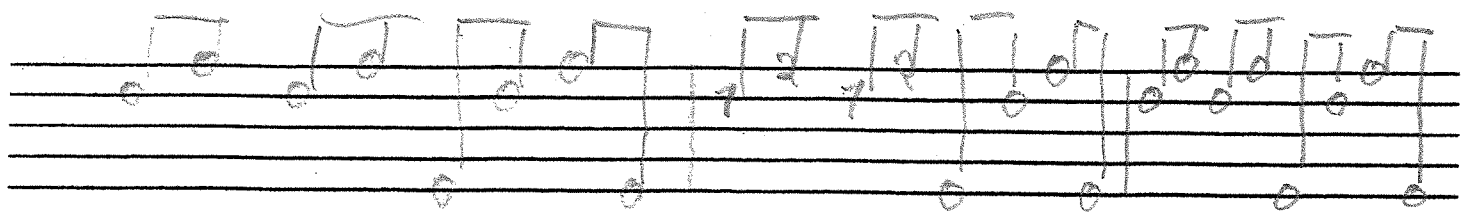
TAKT 1+2

Tag *

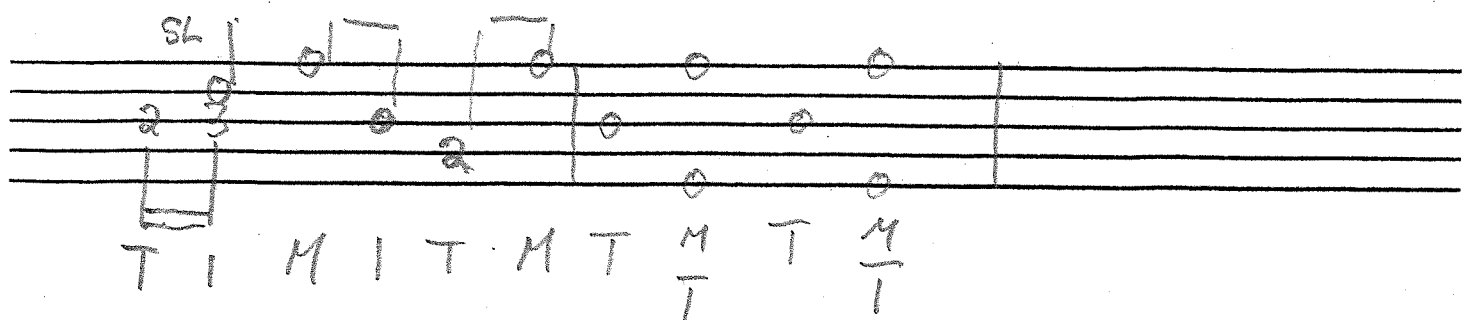
FMB-ROLL



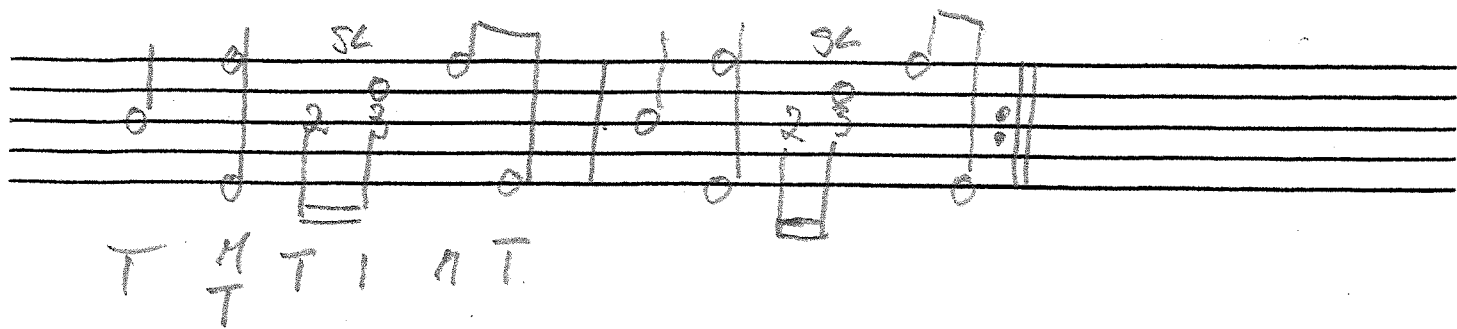
BTC D FW-RO C



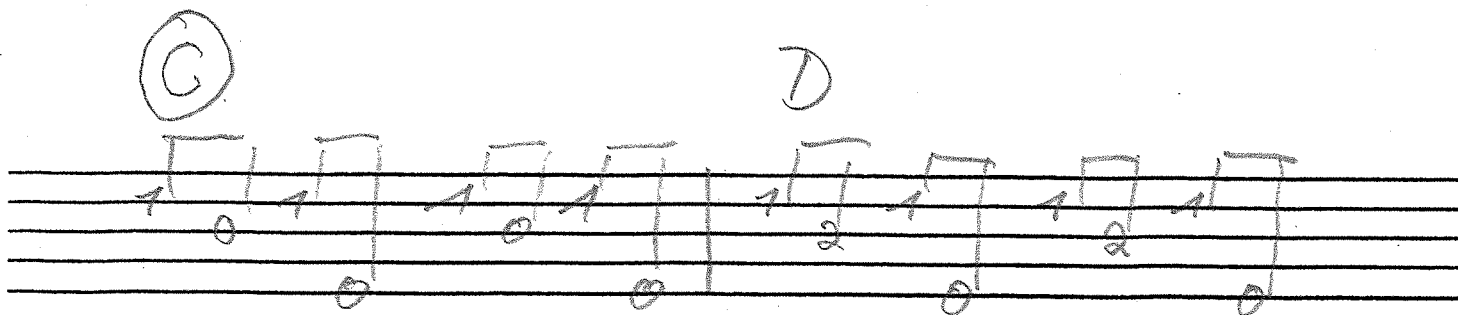
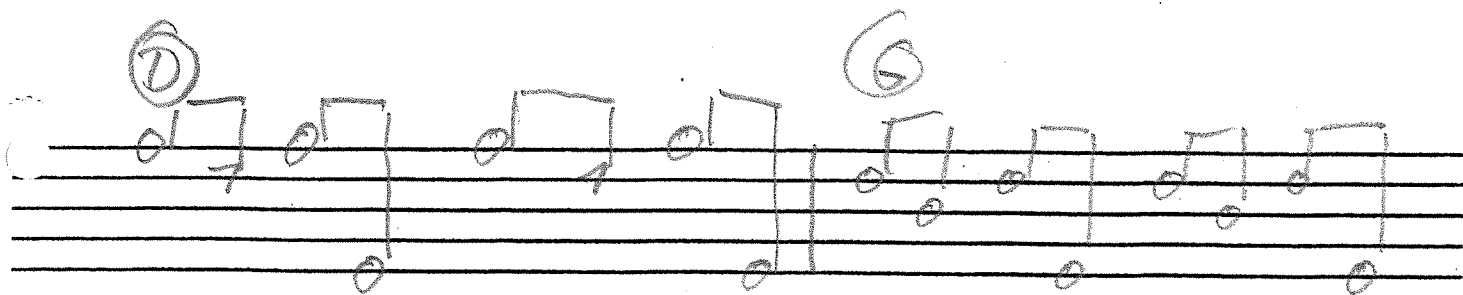
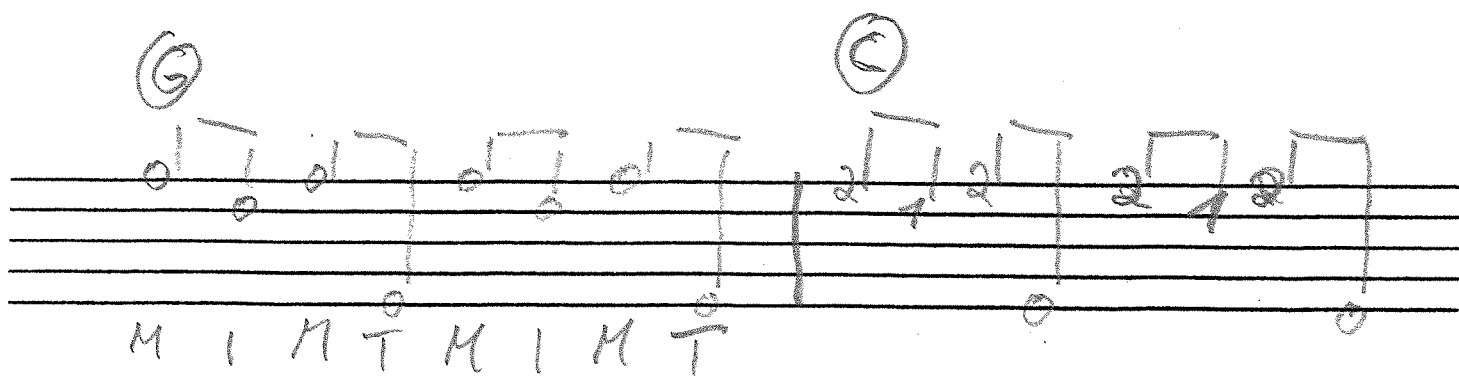
Tag Lick



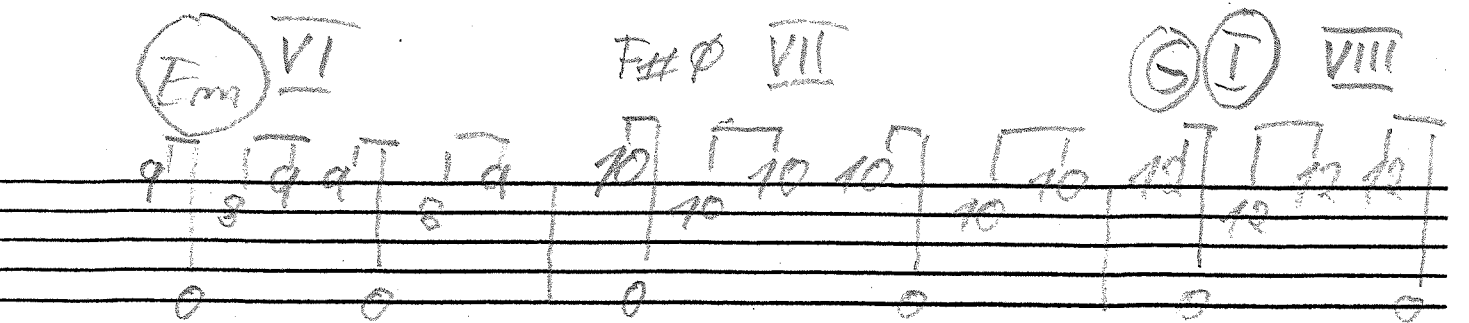
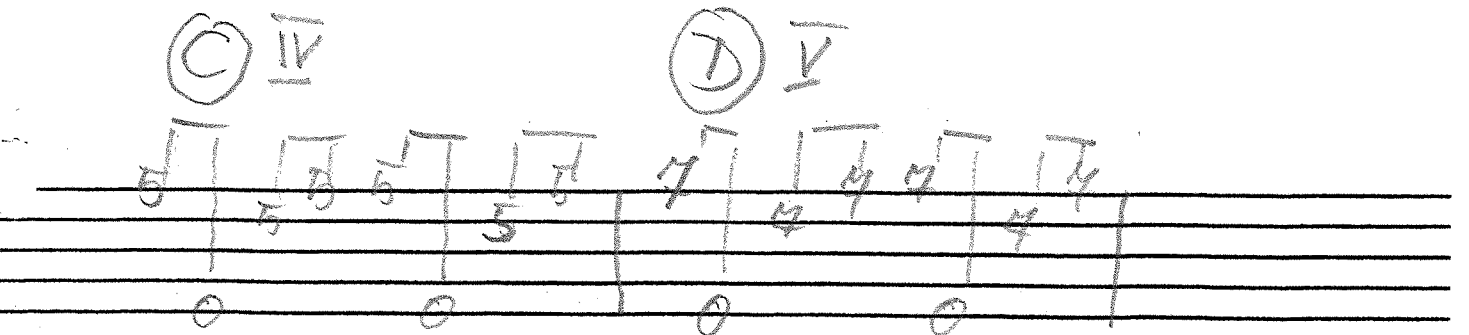
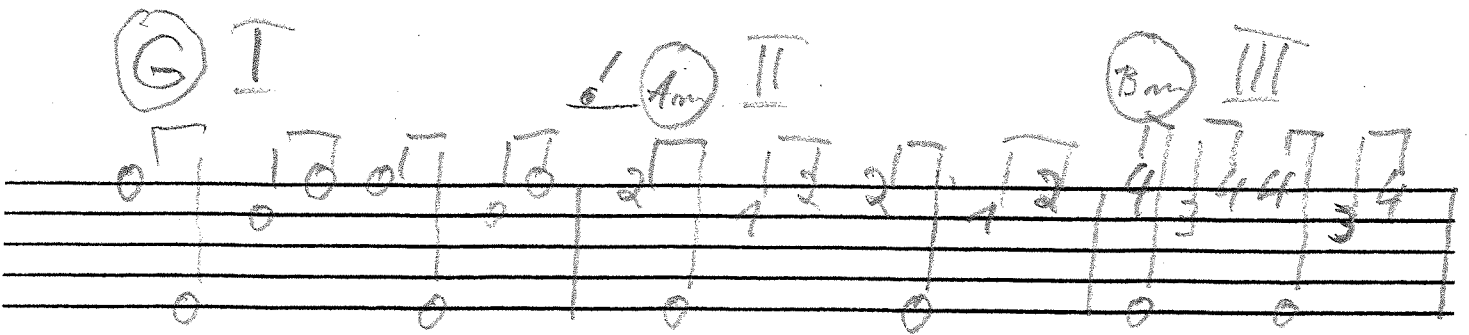
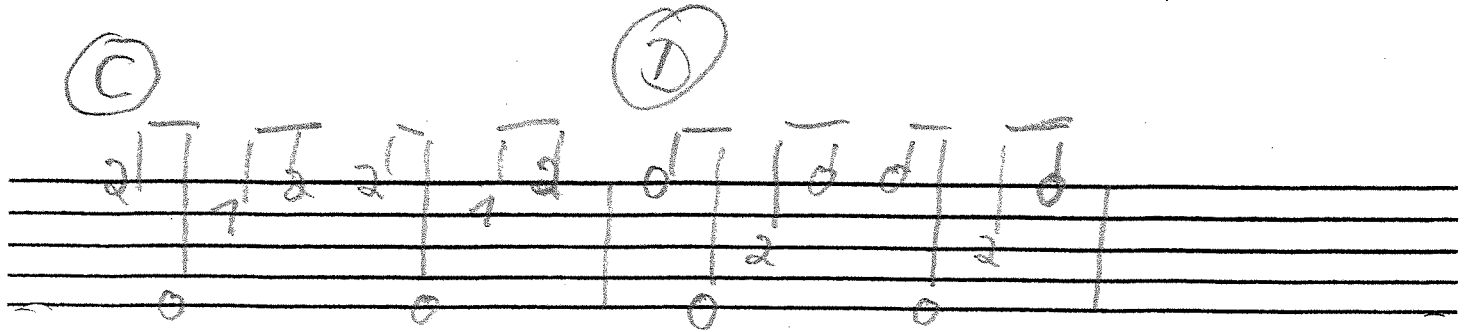
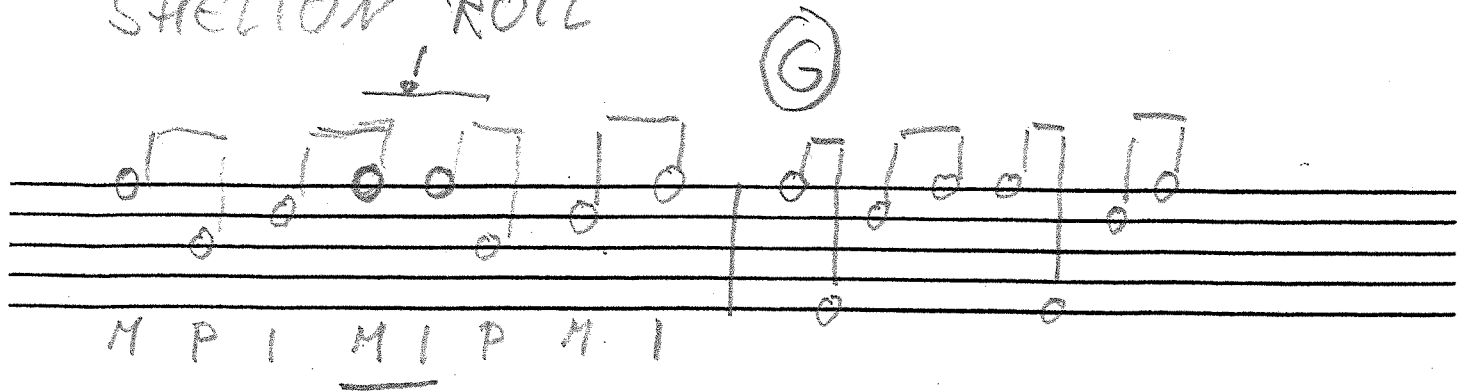
PAUSENFÜLLER



OSBORNE ROLL

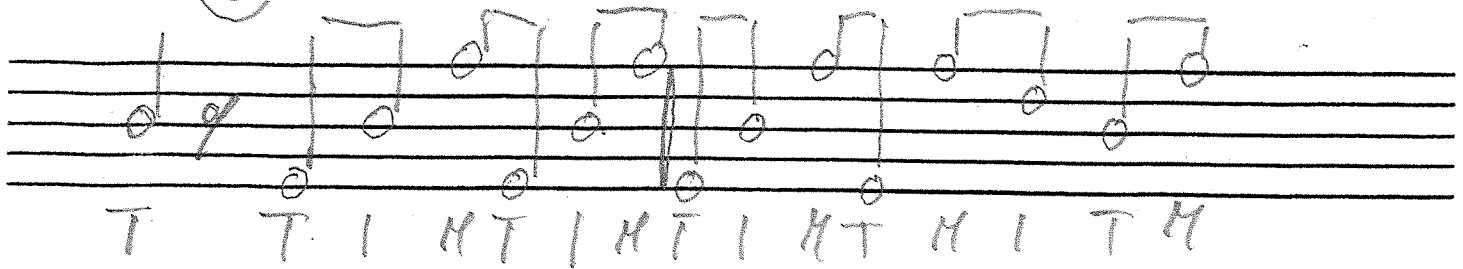


SHELTON ROLL

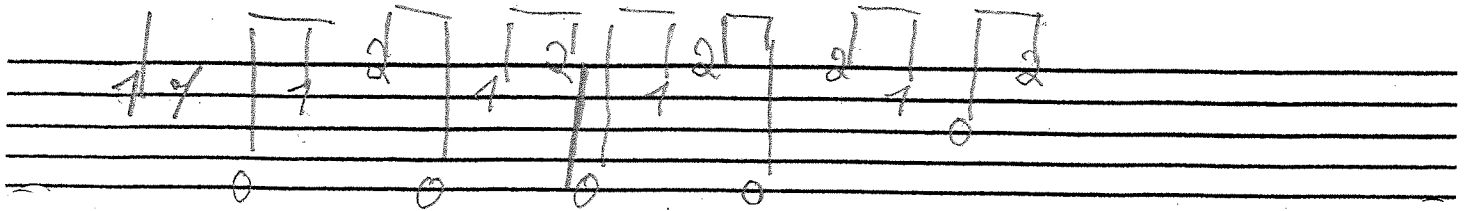


KRISTIN COTT-BENSON 2 PART ROLL

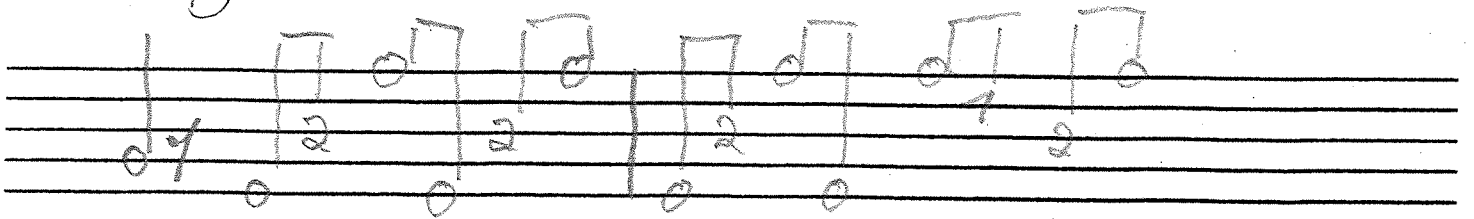
(G)



(C)

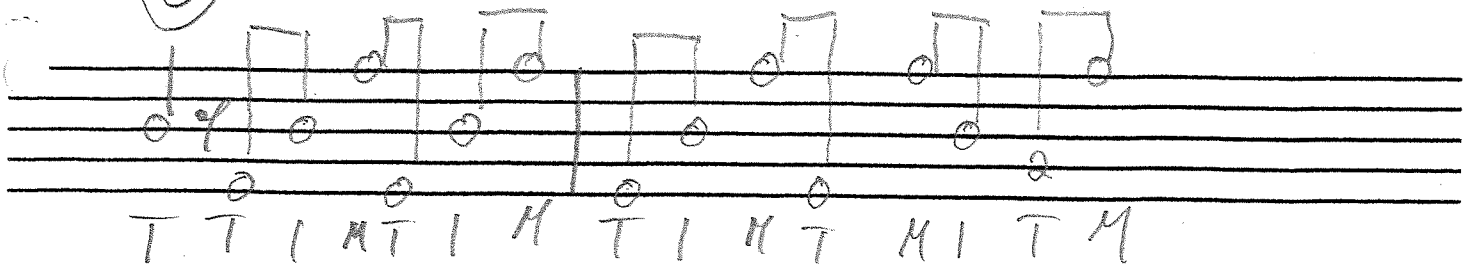


(D)

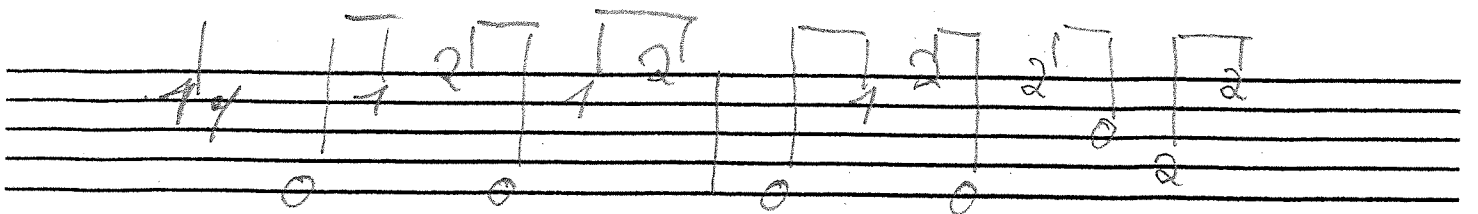


KSB Roll fortgeschritten

(G)



(C)



KSB Roll fortgeschritten II

